

397 - 24660

AMAT 0: ADI 72 S DIGITAL INTERFACE

9 CH - Control Monitor

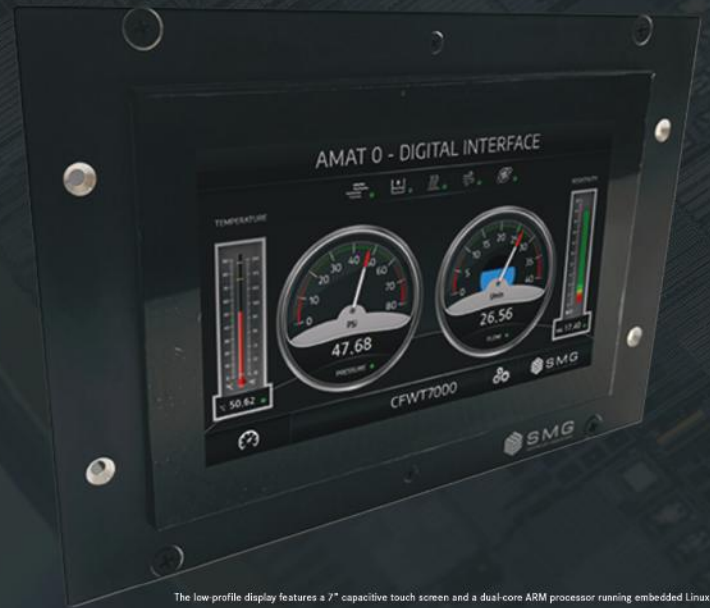
Developed for AMAT 0 - HEATER EXCHANGE®.

This interface was created as system equipment for Amat 0 Heat Exchanger to constantly monitor the flow of data such as: water flow and pressure temperature, resistivity and correct operation of the pump, water level, heating, cooling and water flow.

Features:

- 20 sec. of delay,
- Data logging,
- Trend graph,
- Custom set point.

* Each technical and software specification can be configured as required.



The low-profile display features a 7" capacitive touch screen and a dual-core ARM processor running embedded Linux.

Specifications

Analog. Sig. Out:

- 1 + 5 V - Each Channel - Flow/Temp

Alarm Out:

- 1 SPDT each Channel.

Processor:

Freescale i.MX283 (454MHz, 32bit, ARM 9)

Pressure Range:

- 0 + 60 PSI * Customizable

Flow Range:

- 0 l/min + 30 l/max 100 ° *Customizable

Temperature Range:

- 20 + 90 °C - 68 + 194 °F

Resistivity Range:

- 0,2 + 20 MΩ * Customizable

Supply Power:

- 100 : 250 Volt - 1A - 50/60 Hz.

AMAT 0 HE diagnosis system.

This digital interface was designed to monitor simultaneously multiple output Heater Exchanger values and state:

- Temperature
- Pressure
- Flow
- Resistivity
- Water flow
- Water level
- Heater
- Chill
- Pump

Each monitored value is represented with a led indicator that when working correctly will be green and red if it will be in error.

Each measuring instrument is equipped with its LED that indicates the correct input value.

This HMI system has several adaptations to help easily users, as clicking on an instrument it will be possible to enlarge it and view data in detail. (Pic. B)

All devices are easy to upgrade.



Connect the USB cable to the ports on the back of the device and make updates, download the data log in just a few seconds.

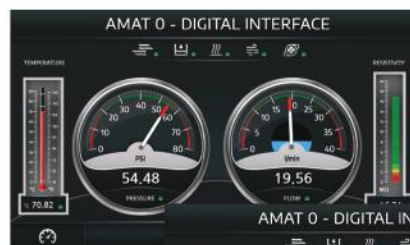
Features and Benefit goal

This control panel will warn the user with a yellow error screen, characterized by a blinking red error, showed after 20 seconds. (Pic. C)

SETTINGS: touching the settings page it will be possible to modify the tolerated error intervals, relating to temperature, pressure, water flow and resistivity.

Leds can be found on top of the interface that will activate in case of error, related to:

- Water flow off
- Low water level
- Heater off
- Chill Off
- Pump off



Pic. A - Home



Pic. B Water pressure value in detail.



Pic. C Water Flow error.

The two symbols in the upper control bar, indicated by LEDs, and an animation that indicates the correct functioning of the pump.

- *Will be possible request special options and features.
- * Each technical software specification such as flow range can be configured as required.

For more don't hesitate to contact us.