

397 - 24990

**CVD | PRODUCER: PWF 016 S**

3 CH - Water Flow Control, 1 CH - Temperature,  
Developed for CVD PRODUCER - AMAT®.

This is a tool device designed for CVD system, Producer - Amat®.  
Plug this device to your Producer - Amat® and keep your production under control.

**Features:**

- 20 sec. of delay,
- Data logging,
- Trend graph,
- Custom set point.

\* Each technical and software specification can be configured as required.



The low-profile display features a 7" capacitive touch screen and a dual-core ARM processor running embedded Linux.

**Specifications**

**Analog. Sig. Out:**  
- 1 ÷ 5 V - Each Channel - Flow/Temp  
**Alarm Out:**  
- 1 SPDT each Channel.  
**Processor:**  
Freescale i.MX283 (454MHz, 32bit, ARM 9)

**Memory:** 2Gbit DDR2 SDRAM  
8GB SD card  
**Flow Range:**  
1 l/min ÷ 16 l/max 100 ° \*Customizable  
**Temperature Range:**  
20 ÷ 90 °C - 68 ÷ 194 °F

**Value transfer rate:**  
100Mbytes/second.  
USB Port x 4 load and real-time diagnostics.  
**Supply Power:**  
- 100 ÷ 250 Volt - 1A - 50/60 Hz.

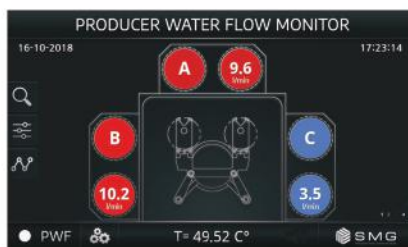
**The new PWF 016 S is smart.**

PWF 016 S is a tool device for CVD, Producer Amat®, designed to monitor water flow and temperature. This device stands out for its precision sensors, which combine maximum accuracy with highest long-term stability.

It combines high precision flow measurement technology and an easy way to monitor the operations:

- If chamber is red A, B or C is heated,
- If chamber is yellow an error is occurred,
- If chamber is blu A, B or C needs to be heated. (Pic. A)

The instrument is operated intuitively via touch screen. All extended functions are accessible browsing pages.



Home page dashboard for Producer water flow monitor.

Temperature and other values will be always under control browsing pages and checking different values

**Features and Benefit goal**

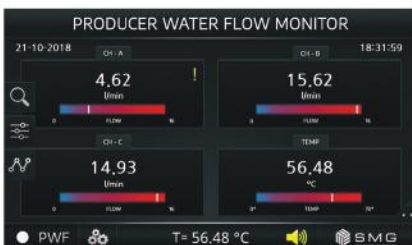
**FEATURES:**

- Data logging,
- Trend graph,
- Custom set point,
- 20 sec. of error delay,
- Error speaker/buzzer.

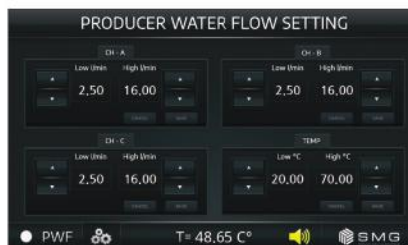
Will be also possible monitor trend of flows in a time span.

**BENEFITS:**

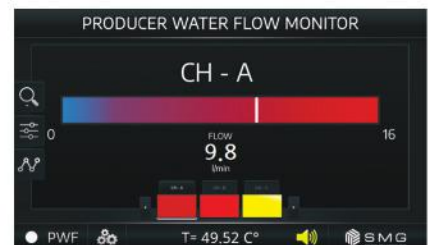
This intelligent device will keep production under control, lowering the probability of generating production errors, raising standards.



Second Home dashboard for all values, (CH - A out of range).



Setting page for CH - A, B, C and temperature.



Monitoring CH - A, (CH - C out of range, in yellow)

Originally developed for Producer®, this device was built to monitor the control of values for several systems. Also available on custom configuration, this digital device maintains the control of the production, allowing to intervene if errors occurred. For more don't hesitate to contact us.